



Tervuren-Huldenberg-Tervuren

Distance 25.9 kms

Altitude min 36 m

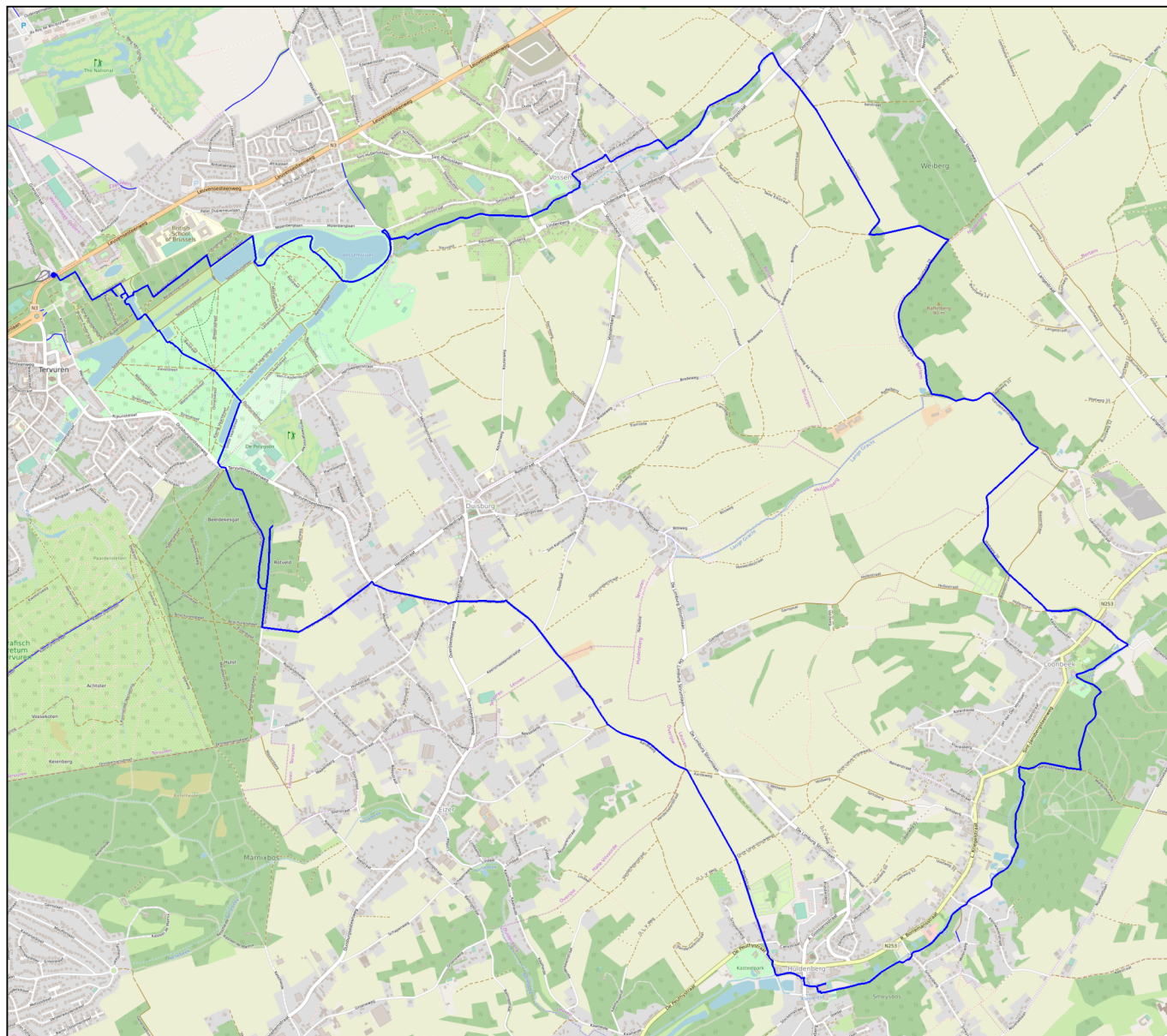
Dénivellé positif 189 m

Altitude max

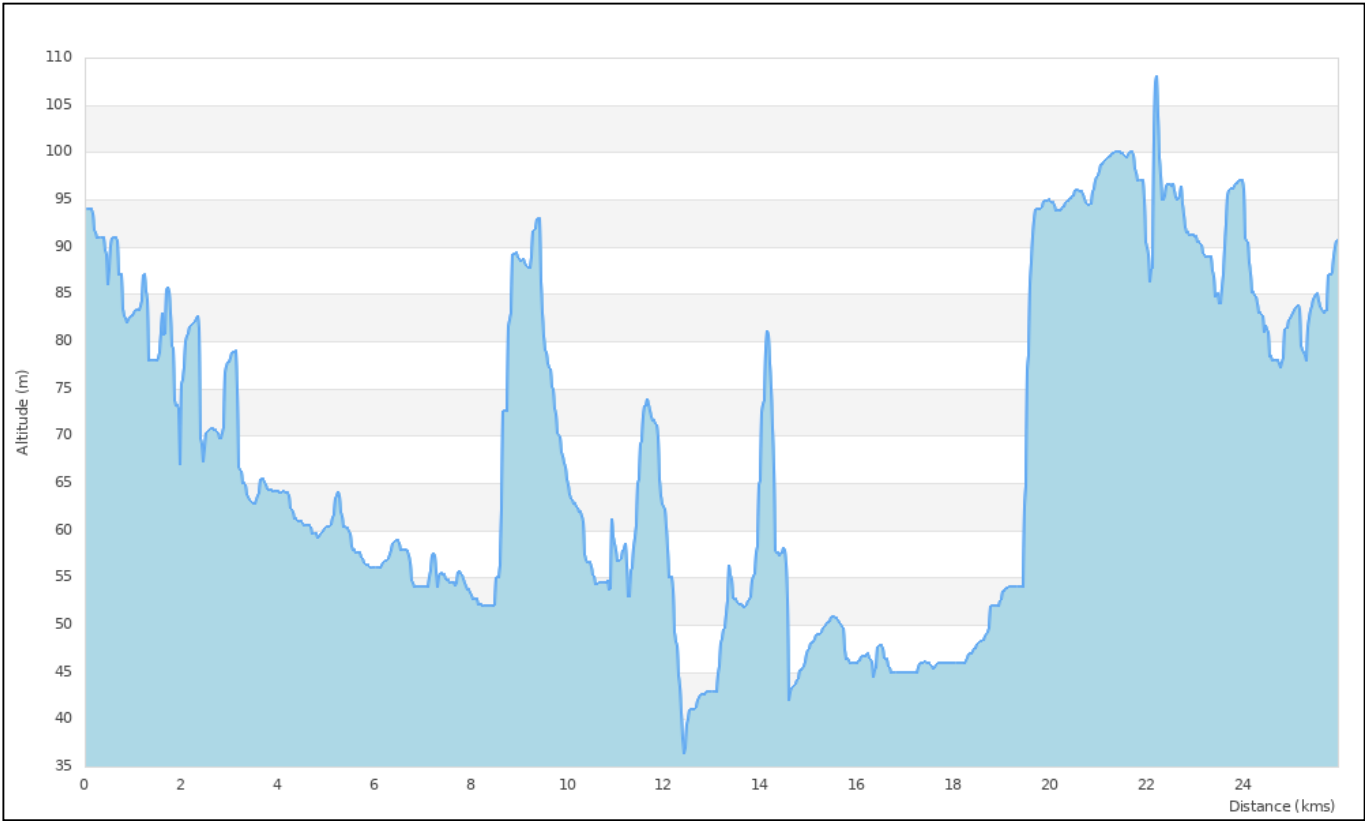
108 m

Dénivellé négatif

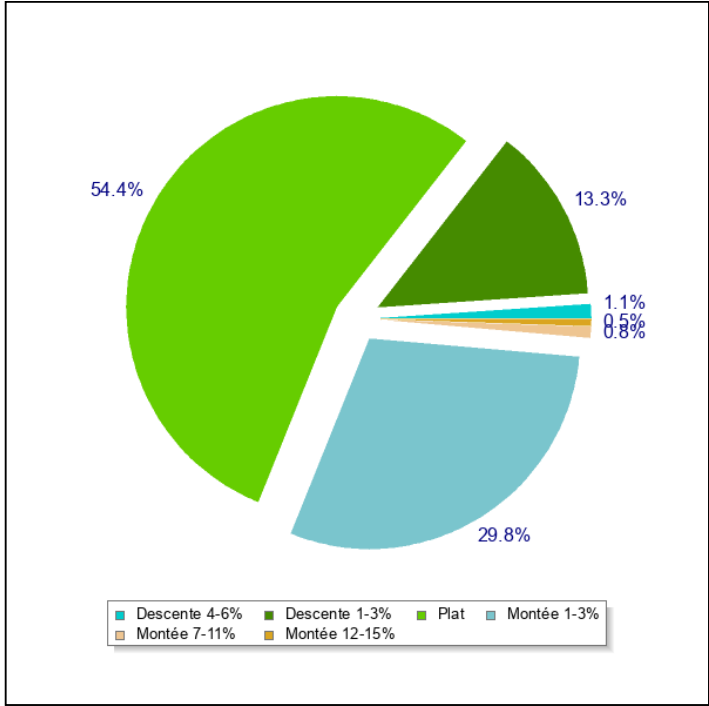
180 m



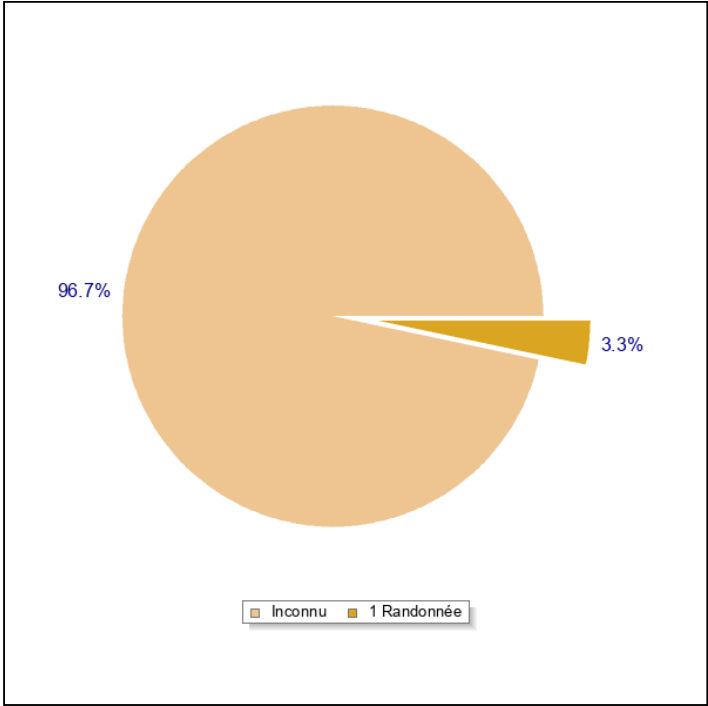
Profil



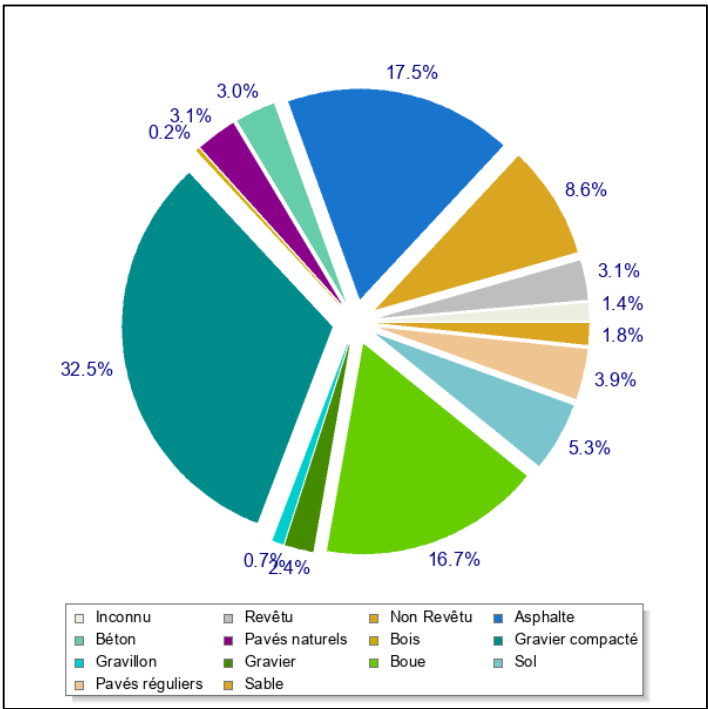
Déclivité



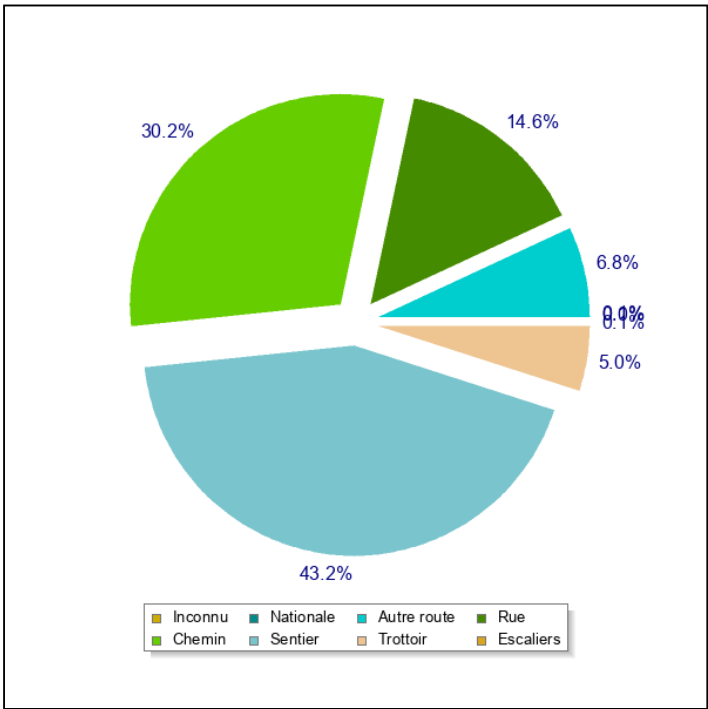
Difficulté



Type de Surface



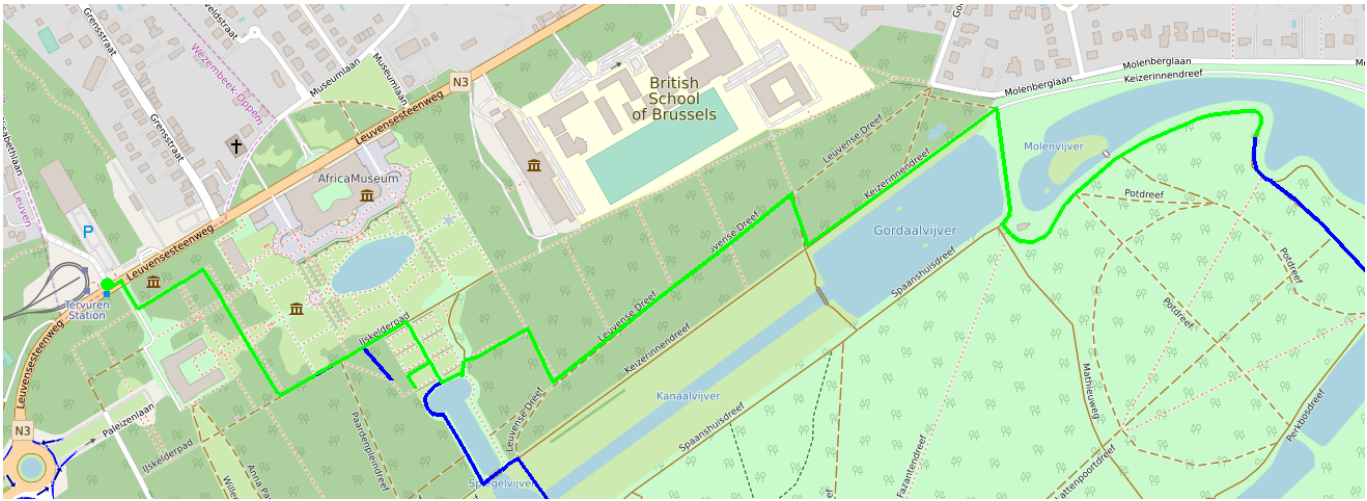
Type de Chemin

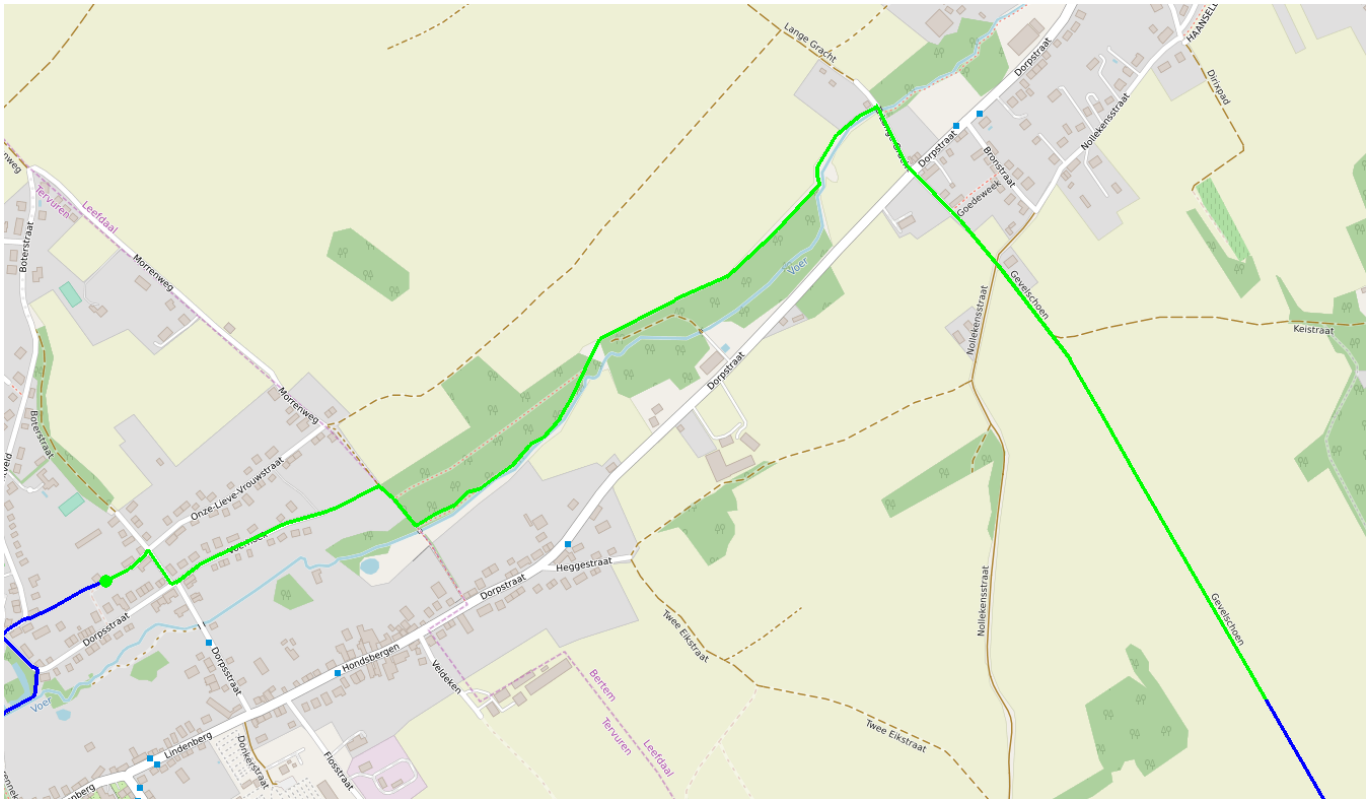
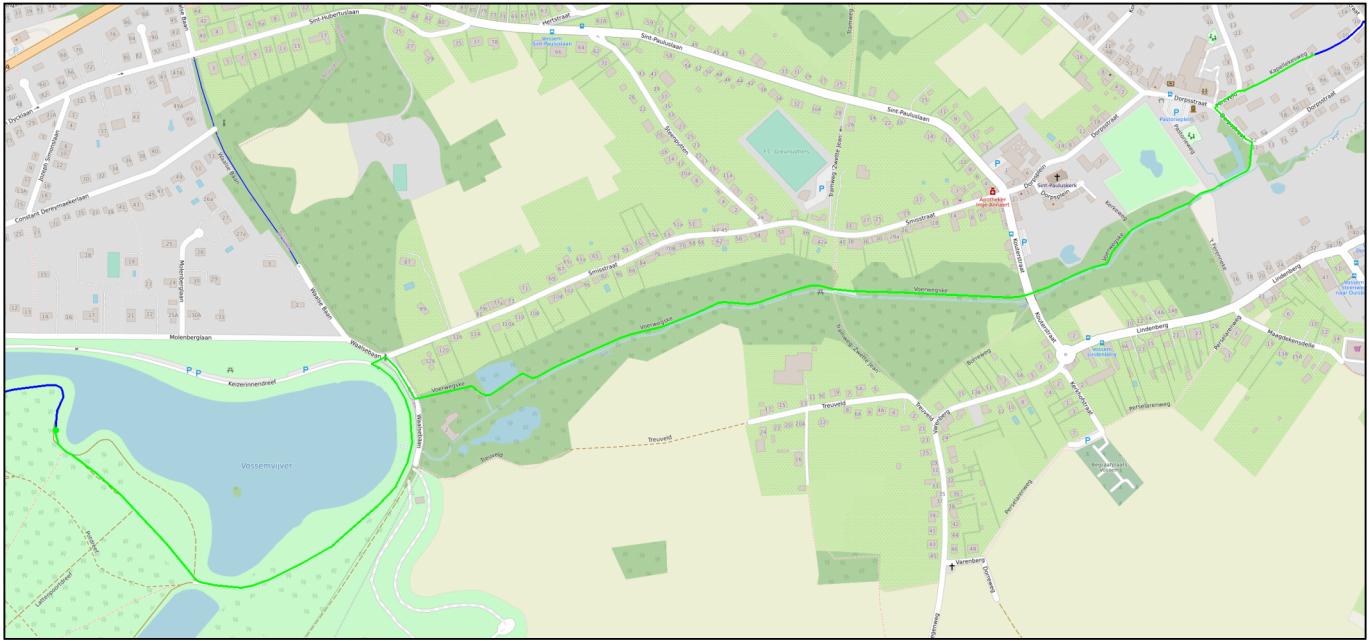


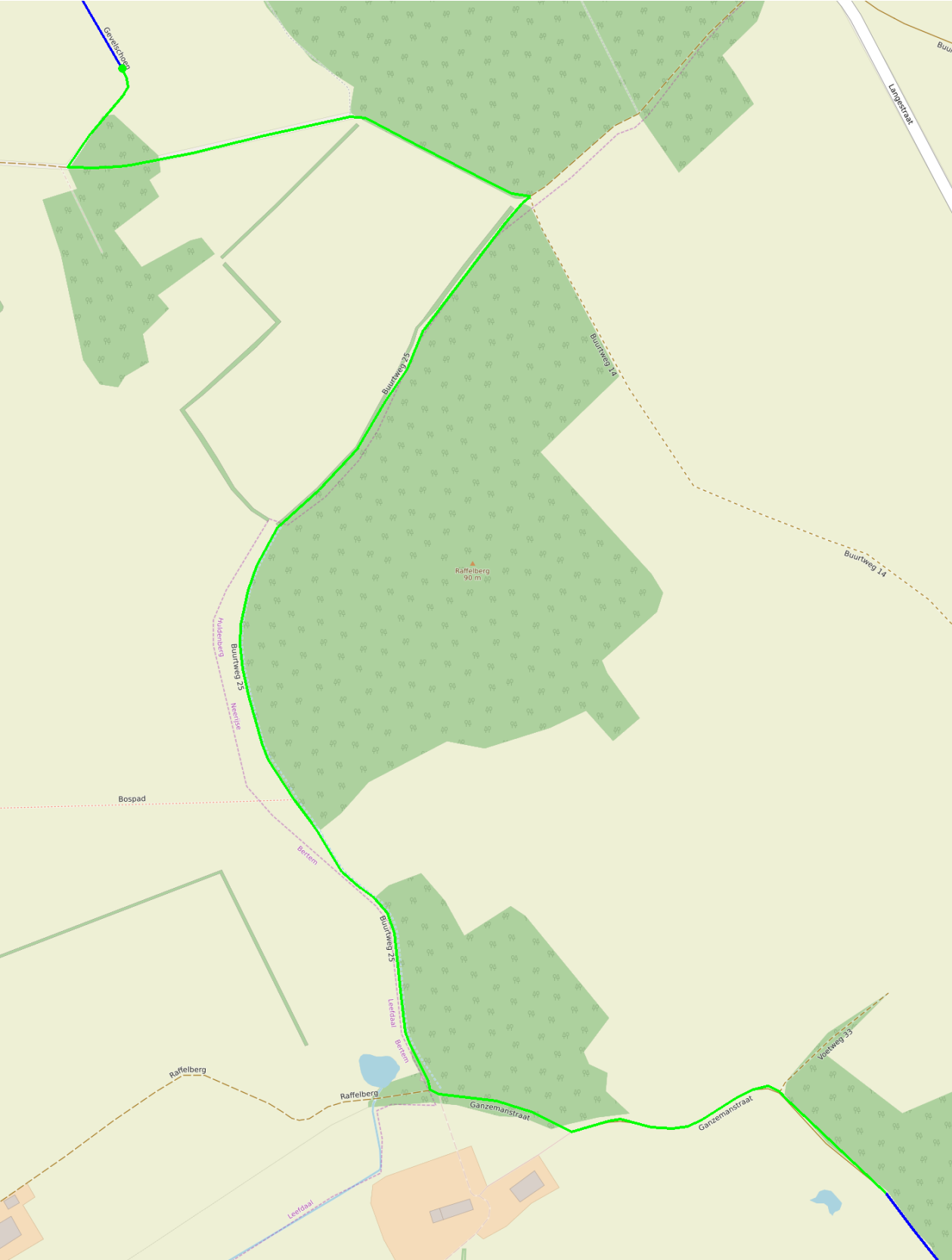
RoadBook



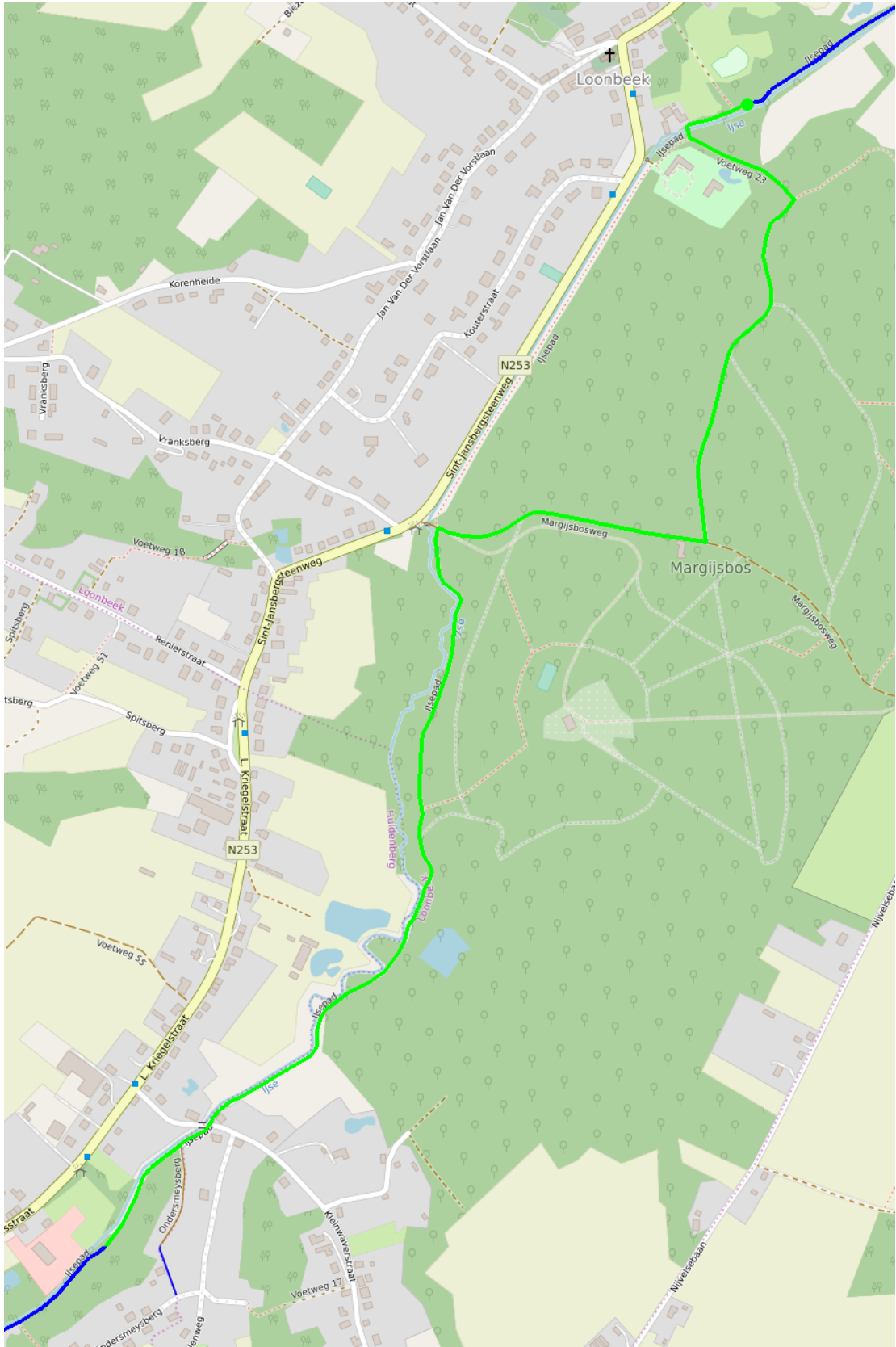
#	Kms	Direction
1	0.007	Tourner à gauche sur Leuvensesteenweg, N3
2	0.323	Tourner fortement à droite sur Margijsbosweg

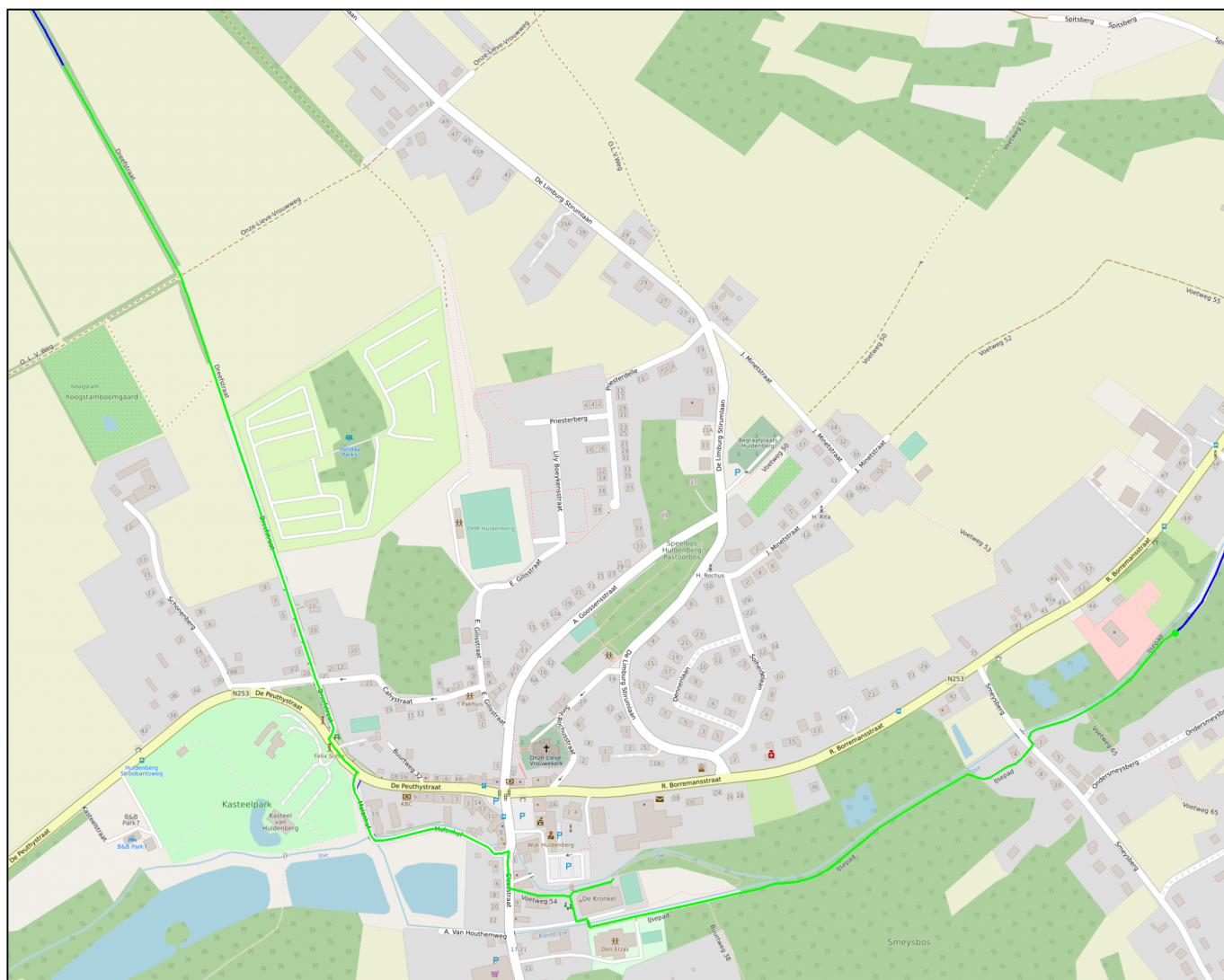


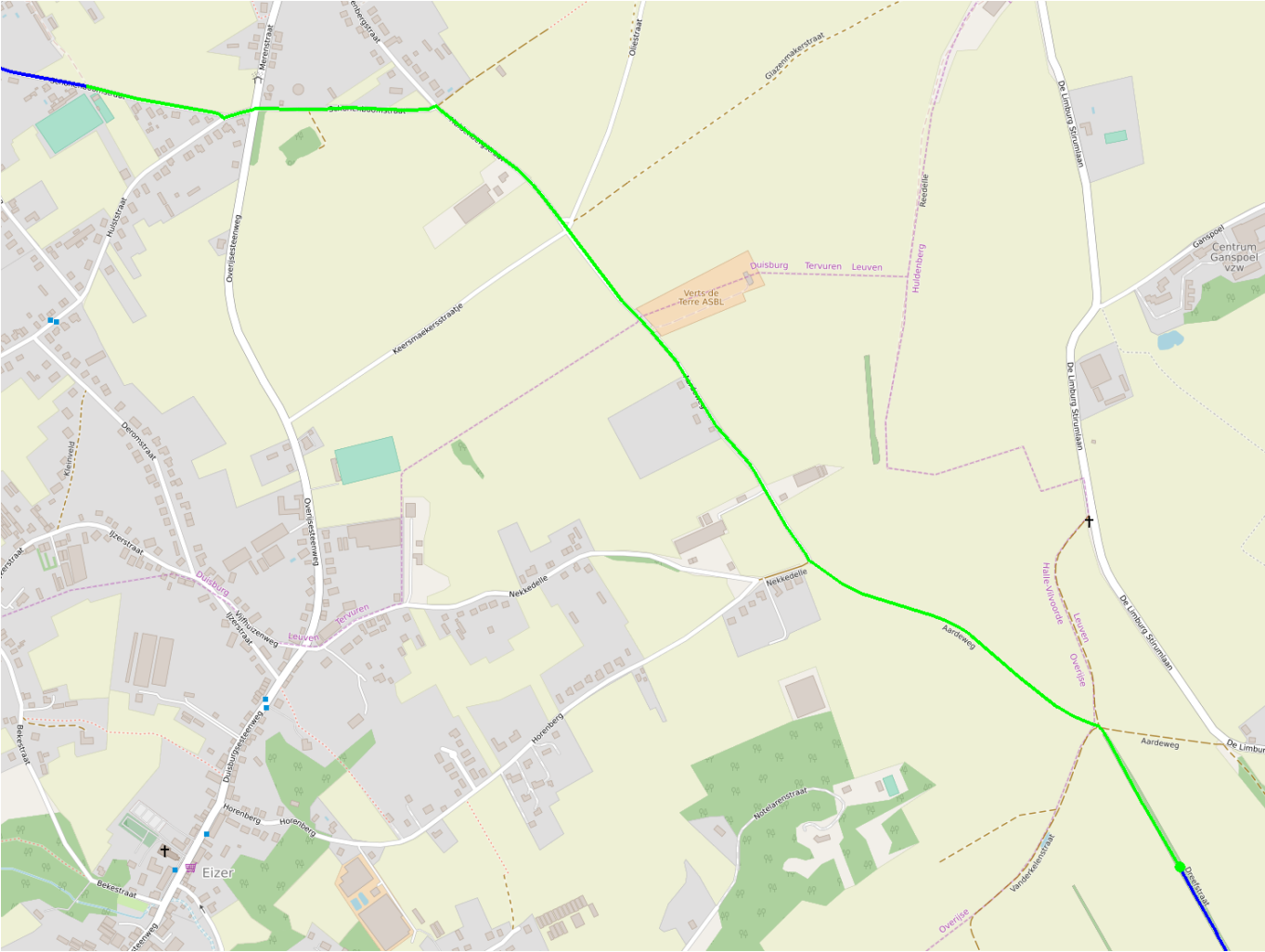


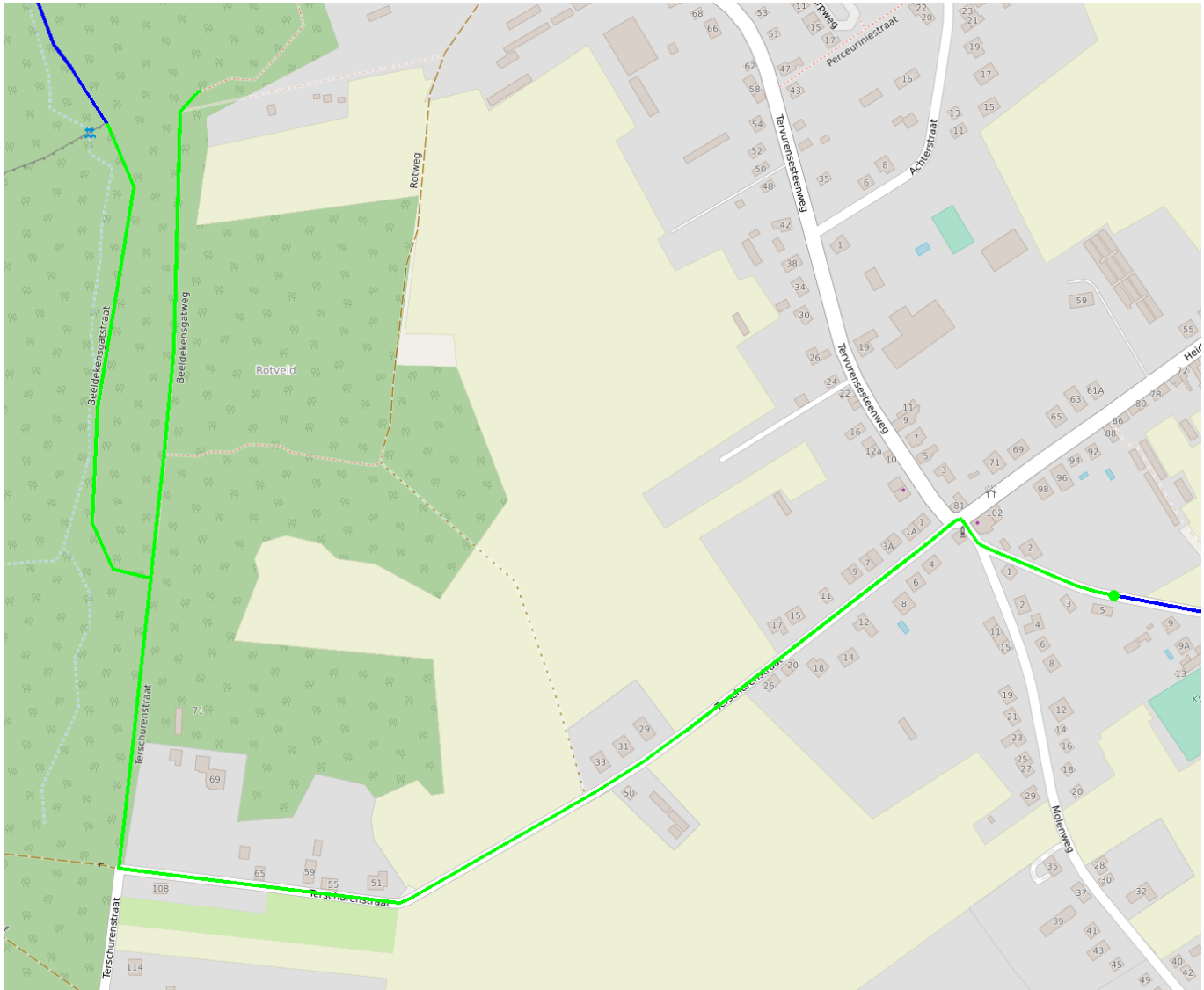


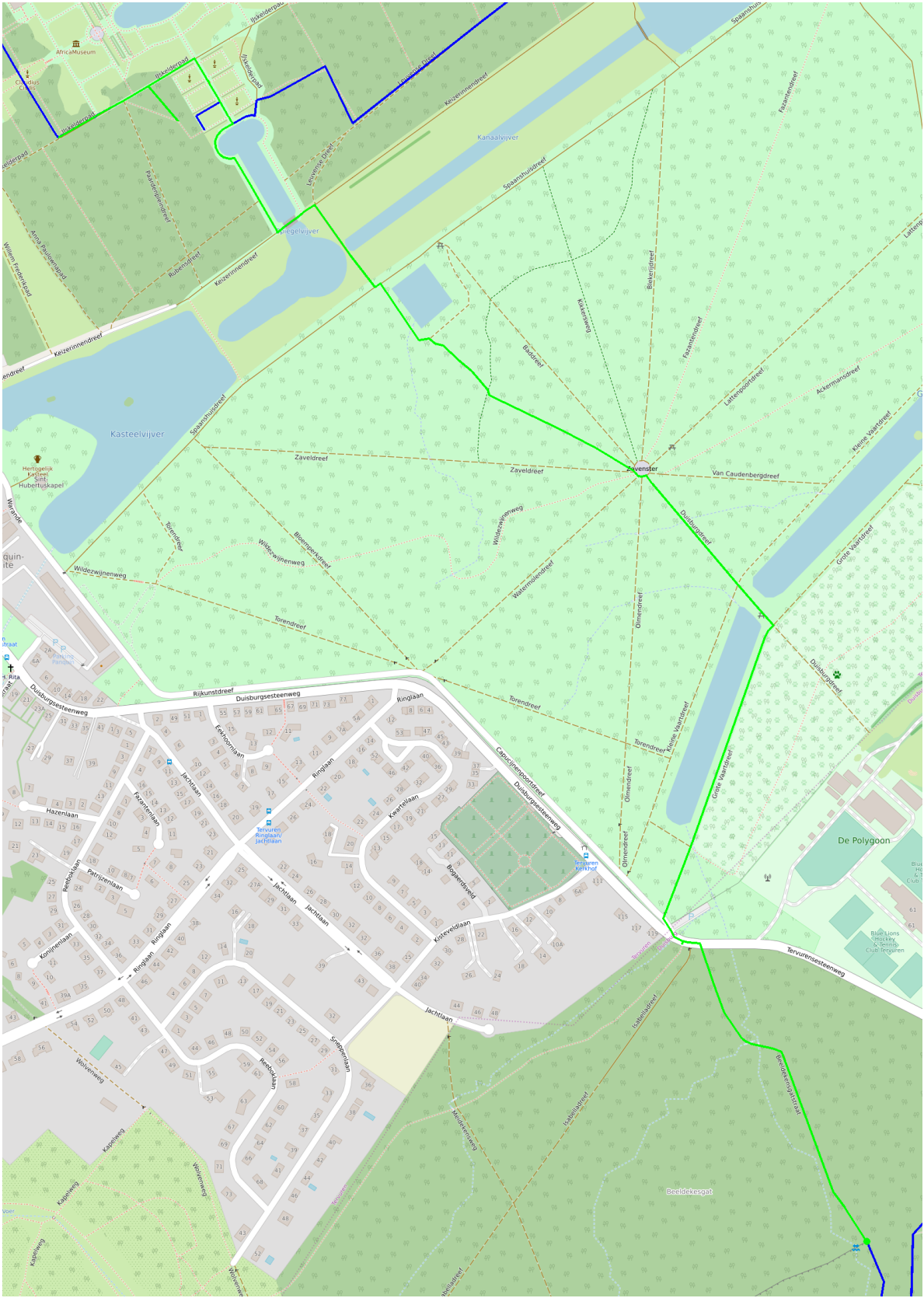














Points d'intérêts

#	km	Categorie	Name	Tags
---	----	-----------	------	------

